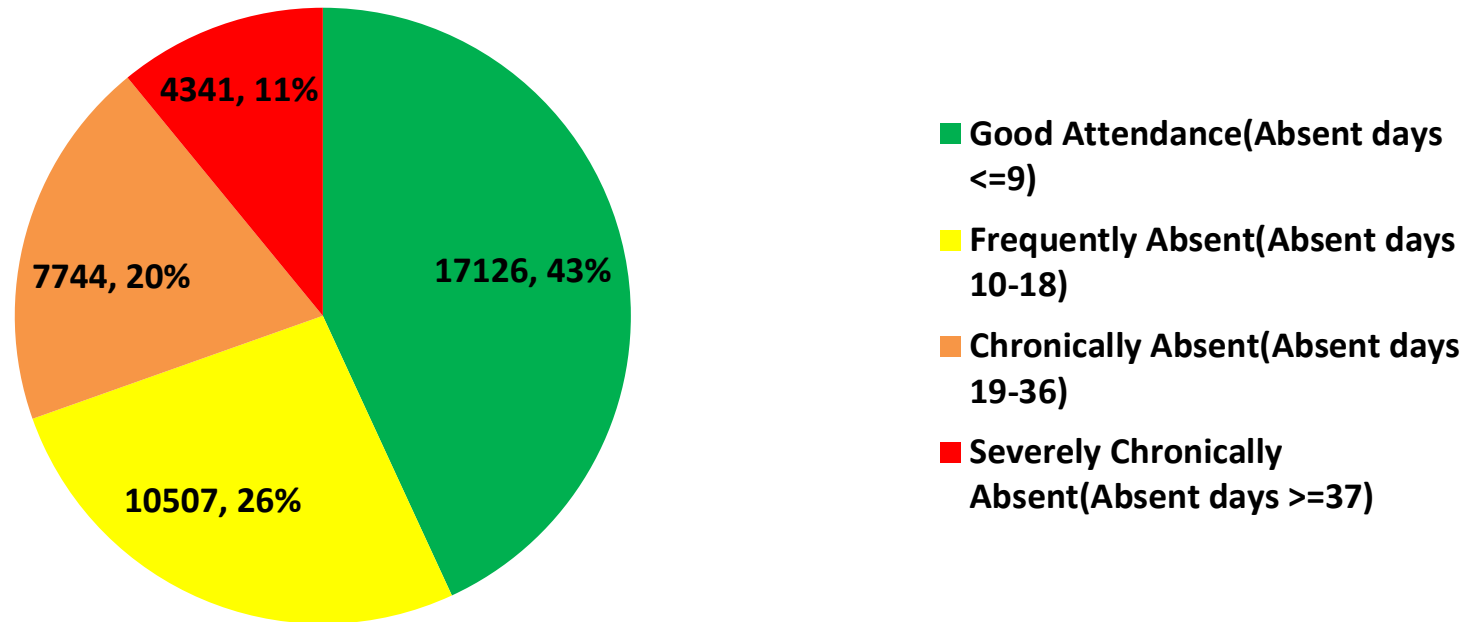
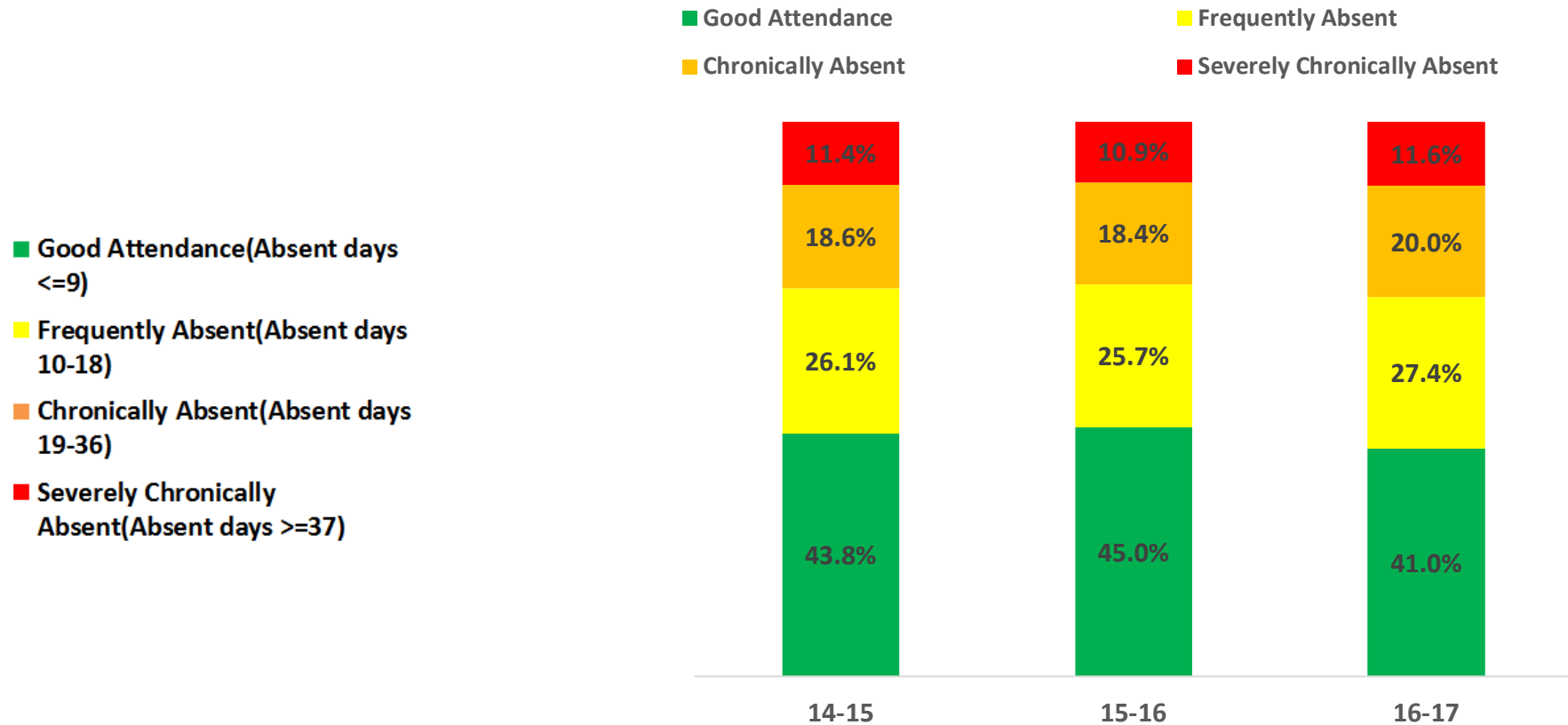


# ATTENDANCE OUTCOMES 2016-17

**Number & Percentage of Students by Attendance Category  
16-17**

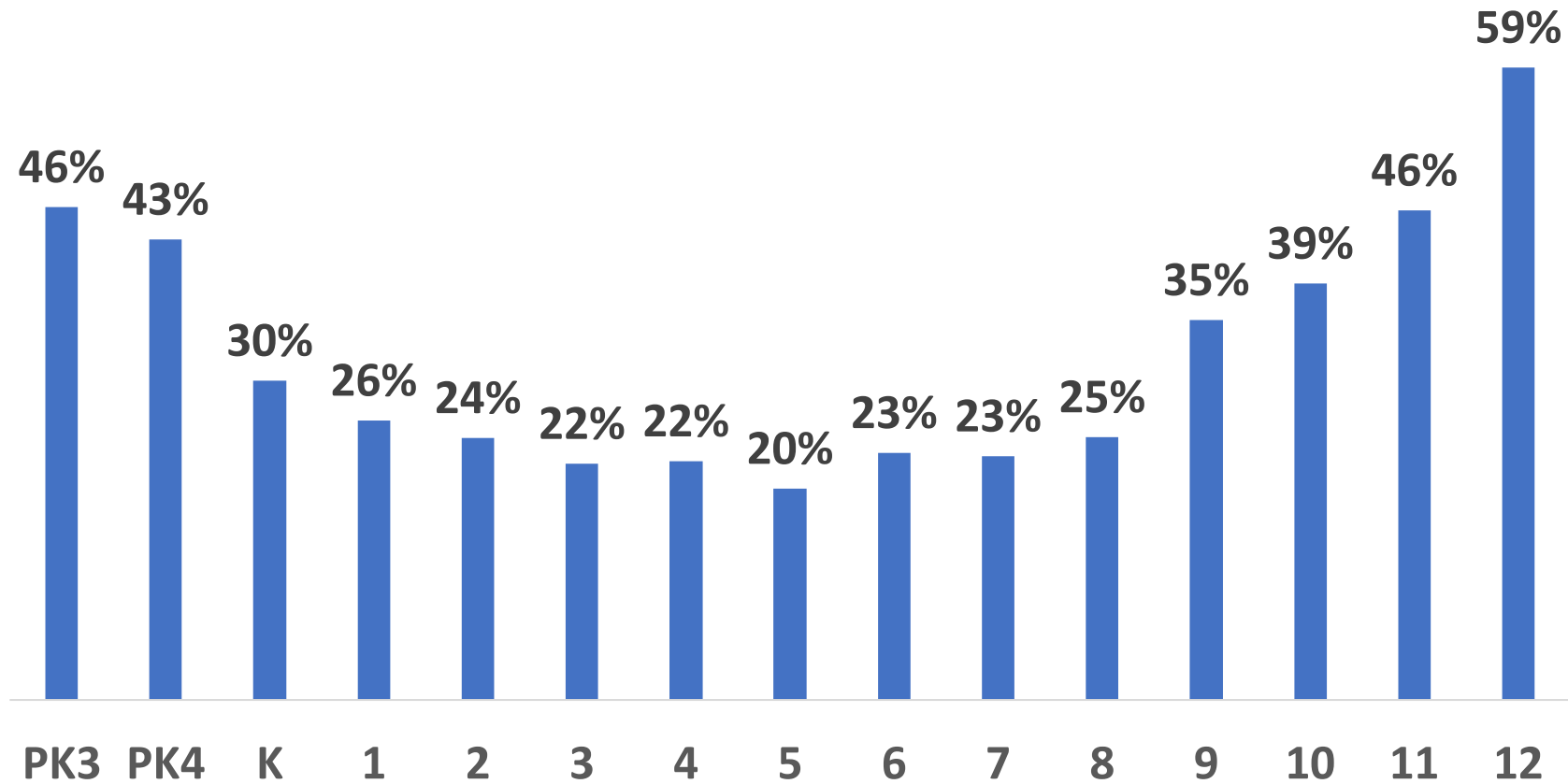


# 3 year Comparison District Overall

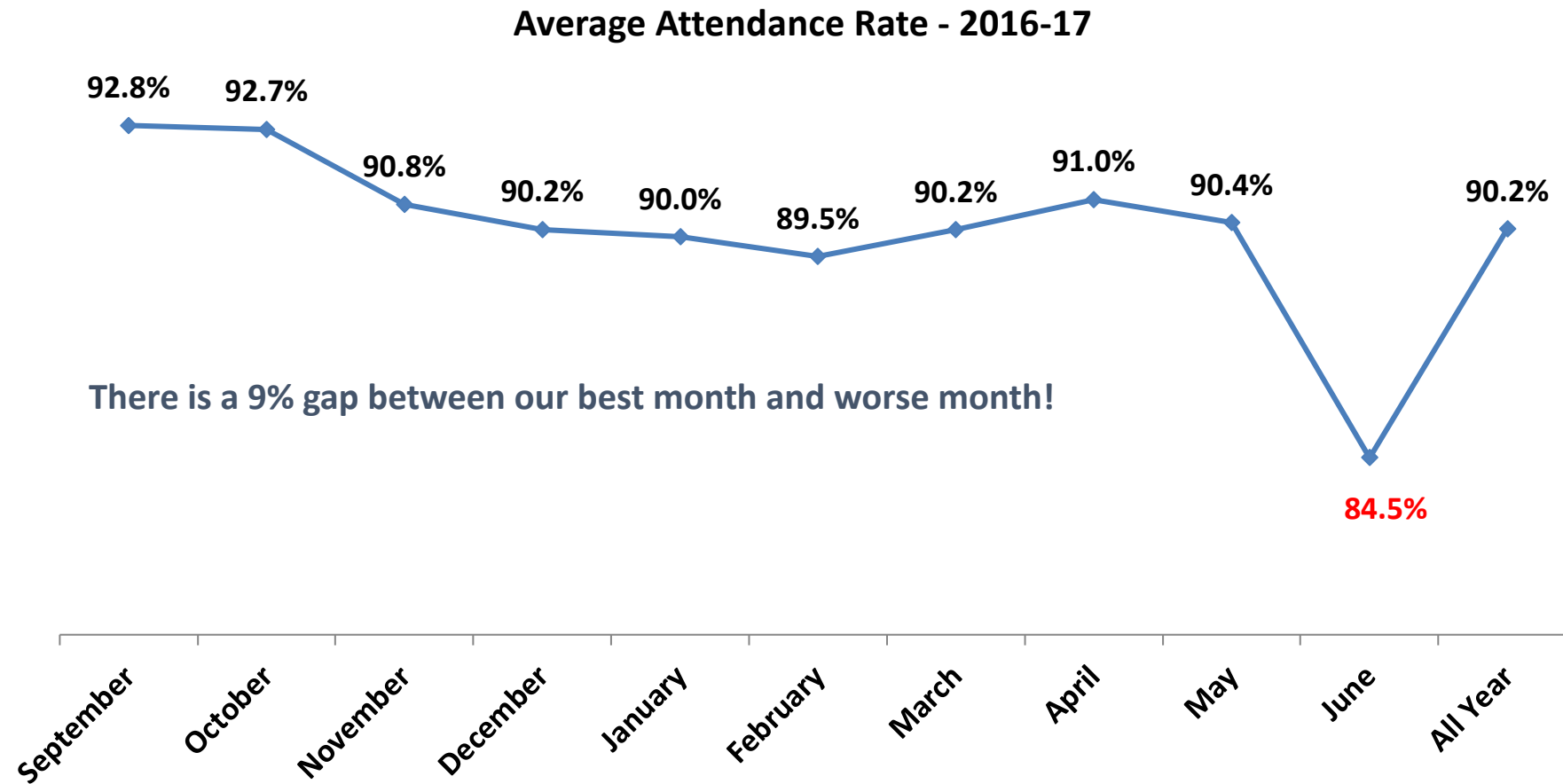


Note: For the district calculation, students with less than 20 total days enrolled in NPS were excluded, and students with more than 185 days enrolled.

# Chronically absent students by grade, 2016-17 school year



# Month by Month View



# Teacher attendance matters!

## ☐ Teacher attendance impacts student performance.

- Just one example: Research shows that **students with teachers who miss 10 or more days of school perform worse in math** and are **less engaged than peers** who were absent less often (Miller, 2007 and 2010)

## ☐ Teacher attendance impacts staff morale.

- The “good actors” see that they often have to pick up the slack for those who are not coming to school.

## ☐ Teacher attendance impacts the district’s budget.

- The district **spends over \$8.5million each year** in substitute teachers.

# Teacher attendance in 2016-17

- Overall, (including all absence codes like FMLA) **teachers missed 56,299 days in 2016-17**
- On average, teachers **missed 16.8 days** (including FMLA).
- Excluding FMLA, **48% of teachers missed 13 or more days** last year (vs 28% nationally 10 or more)

